



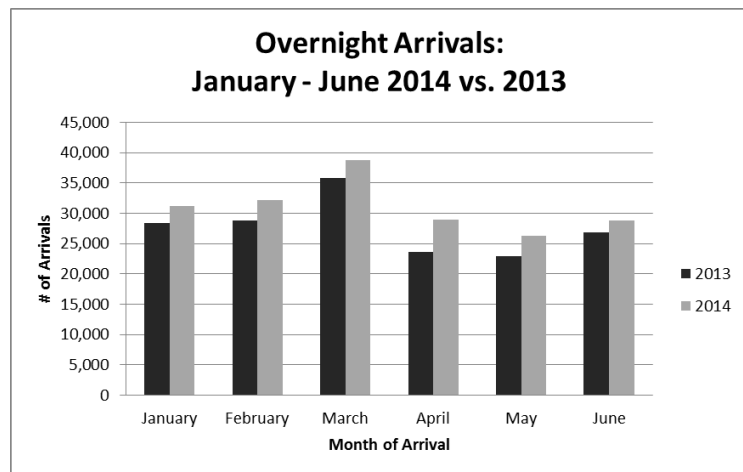
Contact:
 Jana Puga
 Media & Public Relations Officer
 Belize Tourism Board
 E-mail: jpuga@travelbelize.org
 Contact: 227-2488 /227-2420
 Website: www.travelbelize.org

Tourist Arrivals Continue To Go Up!

Belize City, Belize – July 17, 2014 – Tourist arrivals are up by 11.8% for the first half of this year! For the past six months, there have been increases across the board in overnight and cruise arrivals.

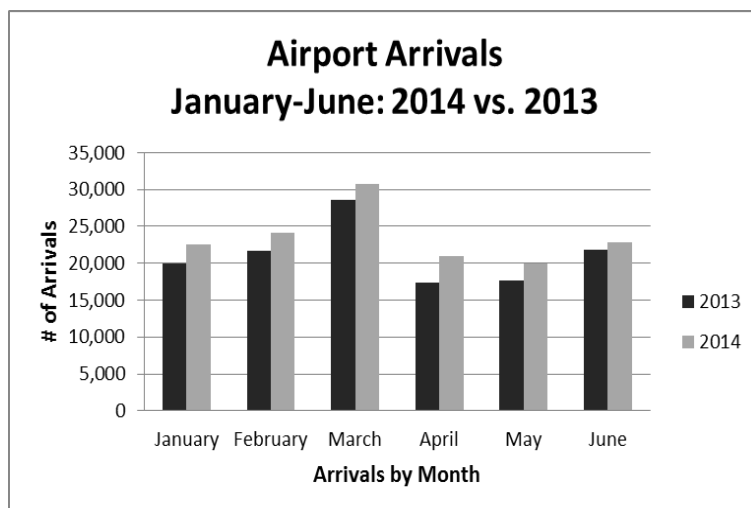
For **overnight arrivals**, we had a 7.1% increase in June of 2014, over June of 2013, with **28,727** tourist visitors. The forecast was a decrease of -2.24%. There was a 14.6% increase in the 2nd quarter, contributing to an overall increase of 11.8% in overnight tourist arrivals for the first six months of 2014. Once again, March has the highest number of arrivals with 38,712 visitors. April saw the highest increase when compared to 2013, with 23%, or a total of 38,712 arrivals.

Overnight Arrivals January-June 2014 s. 2013			
Month	2013	2014	% Change
January	28,431	31,164	9.6
February	28,765	32,105	11.6
March	35,795	38,712	8.1
April	23,555	28,969	23.0
May	22,941	26,319	14.7
June	26,817	28,727	7.1
	166,305	185,998	11.8



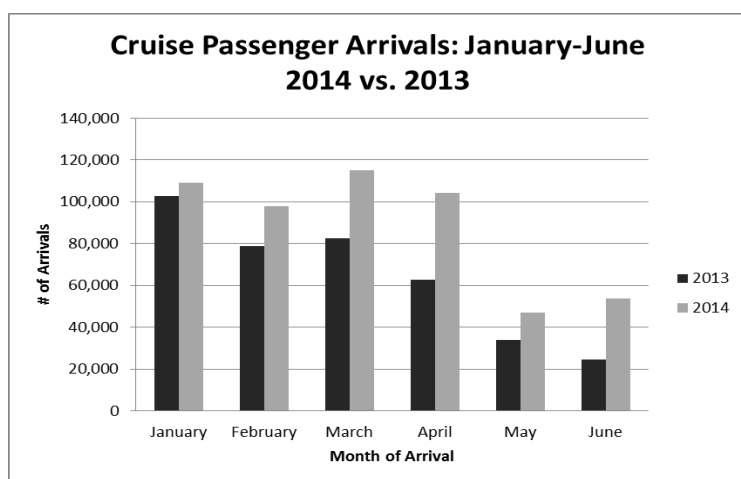
Like previous years, March has seen the most arrivals through the Philip Goldson International Airport, having 30,754 arrivals, which is an increase of 7.4% when compared to March, 2013. The month with the highest increase when compared to 2013 was April, which saw an increase of 20.7%; a total of 21,028 arrivals.

Airport Arrivals January-June 2014 vs. 2013			
Month	2013	2014	% Change
January	19,965	22,562	13.0
February	21,676	24,148	11.4
March	28,623	30,754	7.4
April	17,424	21,028	20.7
May	17,699	19,924	12.6
June	21,820	22,801	4.5
Total	127,207	141,218	11.0



For the first half of this year, cruise passenger arrivals are at 527,037 visitors showing an increase of almost 37%. Overall, Belize saw over 142,000 more visitors in 2014, when compared to the first half of 2013. The month of June alone recorded the highest increase with 120.2% more cruise passenger arrivals when compared to June, 2013. March has seen the most arrivals with 115,227 cruise passengers. There have been 57 more cruise ship calls in 2014 than there were in 2013 through the same time period.

Cruise Passenger Arrivals: January-June 2014 vs. 2013			
Month	2013	2014	% Change
January	102,871	109,251	6.2
February	78,766	97,740	24.1
March	82,416	115,227	39.8
April	62,643	104,188	66.3
May	33,988	46,842	37.8
June	24,432	53,789	120.2
	385,116	527,037	36.9



The largest market for travelers to Belize continues to be Americans, which has increased by 11.8%; the second largest is the European market, having a 23.2% increase; the third largest is the Canadian market, with a 6.4% increase.

About the Belize Tourism Board

The Belize Tourism Board (BTB) is a statutory body within the Belize Ministry of Tourism, Culture and Civil Aviation, and it is governed by a Board of Directors appointed by the Minister of Tourism, Culture and Civil Aviation. The BTB works in conjunction with members of the private sector - including the Belize Hotel Association, Belize Tourism Industry Association and Belize National Tour Operators Association – and is dedicated to building tourism in the most economically and environmentally sustainable manner. As a part of its responsibilities, the BTB promotes Belize as a premier tourism destination to both in-country and international consumers. Among its outreach to the international travel market, the BTB markets the country's unique attractions to travellers, members of the travel trade industry and media outlets in key markets.

The BTB is also dedicated to developing and implementing tourism programs that will help strengthen and grow the Belizean tourism industry; promote good destination stewardship; and instil high quality standards for accommodations and travel experiences. For more information on the BTB and its services, visit www.travelbelize.org.